



SURVEYOR'S OFFICE

Hamilton County

Kenton C. Ward, Surveyor

Phone (317) 776-8495

Fax (317) 776-9628

Suite 188

One Hamilton County Square

Noblesville, Indiana 46060-2230

September 30, 2005

To: Hamilton County Drainage Board

Re: Village of West Clay Drain, Section 9001 Arm

Attached is a petition filed by Brenwick Development along with a non-enforcement request, plans, calculations, quantity summary and assessment roll for the Section 9001 Arm, Village of West Clay Drain to be located in Clay Township. I have reviewed the submittals and petition and have found each to be in proper form.

I have made a personal inspection of the land described in the petition. Upon doing so, I believe that the drain is practicable, will improve the public health, benefit a public highway, and be of public utility and that the costs, damages and expenses of the proposed drain will probably be less than the benefits accruing to the owners of land likely to be benefited. The drain will consist of the following:

12" RCP	670 ft	15" RCP	166 ft
12" PVC	79 ft	18" RCP	286 ft

The total length of the drain will be 1,201 feet.

The retention pond (lake) which is located in Webster Park is not to be considered part of the regulated drain for maintenance purposes. Only the inlets and outlets will be maintained as part of the regulated drain. The maintenance of the pond (lake) shall be the responsibility of the Homeowners Association as per the subdivision covenants on pages 11 and 12, sections 4 and 5, and recorded in the Office of the Hamilton County Recorder as instrument number 199909946964. The Board will however, retain jurisdiction for ensuring the storage volume for which the lake was designed will be retained. Thereby, allowing no fill or easement encroachments.

The subsurface drains (SSD) under curbs are not to be part of the regulated drain. This is per the agreement between Brenwick Development and the Hamilton County Commissioners on April 26, 1999. (See Commissioner's Minute Book 93, Pages 565-566).

I have reviewed the plans and believe the drain will benefit each lot equally. Therefore, I recommend each lot be assessed equally. I also believe that no damages will result to landowners by the construction of this drain. I recommend a maintenance assessment of \$5.00 per acre, \$5.00 per acre for roadways, with a \$120.00 minimum. With this assessment the total annual assessment for this drain/this section will be \$3,771.16.

The petitioner has submitted surety for the proposed drain at this time. The sureties which are in the form of a Performance Bond are as follows:

Agent: Bond Safeguard Insurance Co.
Date: April 22, 2005
Number: 5016369
For: Storm Sewers
Amount: \$127,361.00

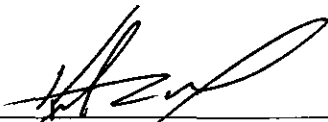
Agent: Bond Safeguard Insurance Company
Date: April 22, 2005
Number: 5016368
For: Erosion Control
Amount: \$40,800.00

Parcels assessed for this drain may be assessed for the Collins-Osborn or William Creek Drain at sometime in the future. Parcels assessed for this drain will also be assessed for the Elliott Creek Drain.

I believe this proposed drain meets the requirements for Urban Drain Classification as set out in IC36-9-27-67 to 69. Therefore, this drain shall be designated as an Urban Drain.

I recommend that upon approval of the above proposed drain that the Board also approve the attached non-enforcement request. The request is for the reduction of the regulated drain easement to those easement widths as shown on the secondary plat for Village of West Clay Section 9001 as recorded in the office of the Hamilton County Recorder.

I recommend the Board set a hearing for this proposed drain for November 28, 2005.



Kenton C. Ward
Hamilton County Surveyor

KCW/llm

STATE OF INDIANA)
)
COUNTY OF HAMILTON)

TO: HAMILTON COUNTY DRAINAGE BOARD

% Hamilton County Surveyor
One Hamilton County Square, Suite 188
Noblesville, IN. 46060-2230

In the matter of Village of WestClay Subdivision, Section
 9001 Drain Petition.

Petitioner is the owner of all lots in the land affected by the proposed new regulated drain. The drainage will affect various lots in Village of WestClay , a subdivision in Hamilton County, Indiana. The general route of such drainage shall be in existing easements and along public roads as shown in the plans on file in the Surveyor's Office.

Petitioner believes that the cost, damages and expenses of the proposed improvement will be less than the benefits which will result to the owners of the land likely to be benefited thereby. Petitioner believes the proposed improvements will:

- (a) improve public health
- (b) benefit a public street
- (c) be of public utility

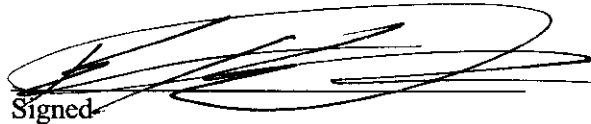
Petitioner agrees to pay the cost of construction of the drainage system and requests periodic maintenance assessments by the Board thereafter.

The Petitioner also agrees to the following:

1. To provide the Drainage Board a Performance Bond or Non-Revocable Letter of Credit for the portion of the drainage system which will be made a regulated drain. The bond will be in the amount of 120% of the Engineer's estimate. The bond will be in effect until construction of 100% of the system is completed and so certified by the Engineer.
2. The Petitioner shall retain an Engineer throughout the construction phase. At completion of the project the Petitioner's Engineer shall certify that the drainage system which is to be maintained as a regulated drain has been constructed as per construction plans.
3. The Petitioner agrees to request in writing to the County Surveyor any changes from the approved plan and must receive written authorization from the County Surveyor prior to implementation of the change. All changes shall be documented and given to the Surveyor to be placed in the Drain file.
4. The Petitioner shall instruct his Engineer to provide a reproducible print on a 24" x 36" Mylar of the final design of the Drainage System. This shall be submitted to the County Surveyor prior to the release of the Performance Bond.
5. The Petitioner shall comply with the Erosion Control Plan as specified on the construction plans. Failure to comply with the Erosion Control Plan shall be determined by the Board as being an obstruction to the drainage system. The County Surveyor shall immediately install or repair the needed measures at Petitioners cost as per IC 36-9-27-46.

The Petitioner further requests that the Drain be classified as an Urban Drain as per IC 36-9-27-69(d).

RECORDED OWNER(S) OF LAND INVOLVED


Signed

Signed

KEVIN KAULEK, AGENT & OWNER: BREWICK TND COMMUNITIES, LLC.
Printed Name

Printed Name

3/28/05
Date

Date

Signed

Signed

Printed Name

Printed Name

Date

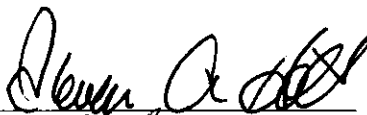
Date

FINDINGS AND ORDER
CONCERNING THE MAINTENANCE OF THE
Village of West Clay Drain, Section 9001 Arm


On this **28th day of November 2005**, the Hamilton County Drainage Board has held a hearing on the Maintenance Report and Schedule of Assessments of the **Village of West Clay Drain, Section 9001 Arm**.

Evidence has been heard. Objections were presented and considered. The Board then adopted the original/amended Schedule of Assessments. The Board now finds that the annual maintenance assessment will be less than the benefits to the landowners and issues this order declaring that this Maintenance Fund be established.

HAMILTON COUNTY DRAINAGE BOARD



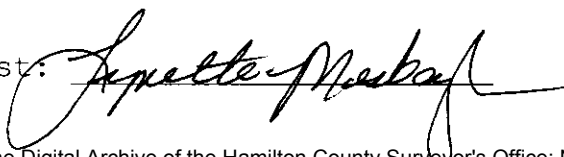
President



Member



Member

Attest: 

CERTIFICATE OF COMPLETION AND COMPLIANCE

TO: HAMILTON COUNTY SURVEYOR
RE: Village of West Clay Section 9001

I hereby certify that:

1. I am a Register Engineer in the State of Indiana
2. I am familiar with the plans and specifications for the above referenced subdivision.
3. I have personally observed and supervised the completion of the Drainage Facilities for the above referenced subdivision, and
4. The drainage facilities within the above referenced subdivision to the best of my knowledge, information, and belief have been installed and completed in conformity with all plans and specifications.
5. The drainage facilities within the above referenced subdivision to the best of my knowledge, information and belief have been correctly represented on the Record Drawings, Digital Record Drawings and the Structure Data Spreadsheet.

Signature:  Date: 12-8-05

Type or print name: Brandon T. Burke, P.E.

Business /Address: The Schneider Corporation

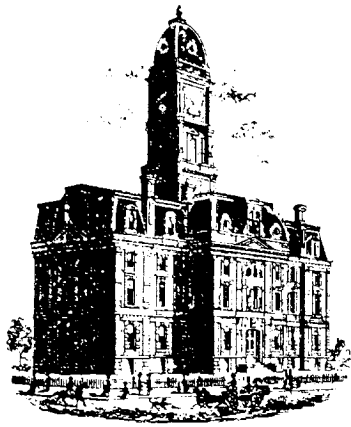
12821 E. New Market Street, Suite 100, Carmel, IN 46032

Telephone: (317) 569-8112

INDIANA REGISTRATION NUMBER

PE 10000075

SEAL



SURVEYOR'S OFFICE

Hamilton County

Kenton C. Ward, CFM
 Surveyor of Hamilton County
 Phone (317) 776-8495
 Fax (317) 776-9628

Suite 188
 One Hamilton County Square
 Noblesville, Indiana 46060-2230

To: Hamilton County Drainage Board

March 21, 2007

Re: Village West Clay: Section 9001

Attached are as-builts, certificate of completion & compliance, and other information for Villages of West Clay Section 9001. An inspection of the drainage facilities for this section has been made and the facilities were found to be complete and acceptable.

During construction, changes were made to the drain, which will alter the plans submitted with my report for this drain-dated September 30, 2005. The report was approved by the Board at the hearing held December 22, 2005. (See Drainage Board Minutes Book 8, Pages 555-556) The changes are as follows:

Structure:	Length:	Size	Material:	Up Invert:	Dn Invert	Grade:	Changes:
639-638	63	12	RCP	892.02	891	1.46	
638-A654	28	12	RCP	891	890.87	0.46	
627-626	29	12	RCP	895	894.62	1.31	
626-625	159	12	RCP	894.62	893.19	0.9	-1
620-623	167	15	RCP	895.36	894.91	0.27	1
622-621	29	12	RCP	898.78	897.6	4.07	
621-620	167	12	RCP	896.43	895.19	0.74	1
620-619	251	18	RCP	894.89	894.29	0.24	-2
619-617	31	18	RCP	894.24	894.18	0.19	-2
616-615	29	12	RCP	898.35	898.11	0.83	
615-614	168	12	RCP	898.07	895.82	1.34	
636-635A	28	12	PVC	894.45	892.74	6.11	
635A-635	49	12	PVC	892.74	889.54	6.53	-4

RCP Pipe Totals:

12 PVC	77
12	672
15	167
18	282
Total:	1198

The length of the drain due to the changes described above is now **1,198 feet**.

The non-enforcement was approved by the Board at its meeting on December 22, 2005 and recorded under instrument #200500077024.


The following sureties were guaranteed by Bond Safeguard Insurance Company and released by the Board on its October 9, 2006 meeting.

Bond-LC No: 5016369
Insured For: Storm Sewers
Amount: \$127,361.00
Issue Date: April 22, 2005

Bond-LC No: 5016368
Insured For: Erosion Control
Amount: \$40,800.00
Issue Date: April 22, 2005

I recommend the Board approve the drain's construction as complete and acceptable.

Sincerely,



Kenton C. Ward, CFM
Hamilton County Surveyor

KCW/slm

SEC. 28-T18N-R3E

VILLAGE OF WESTCLAY SECTION 9001

(CONSTRUCTION PLANS)

HAMILTON COUNTY CARMEL, INDIANA

DEVELOPER:

BRENNICK DEVELOPMENT CO.

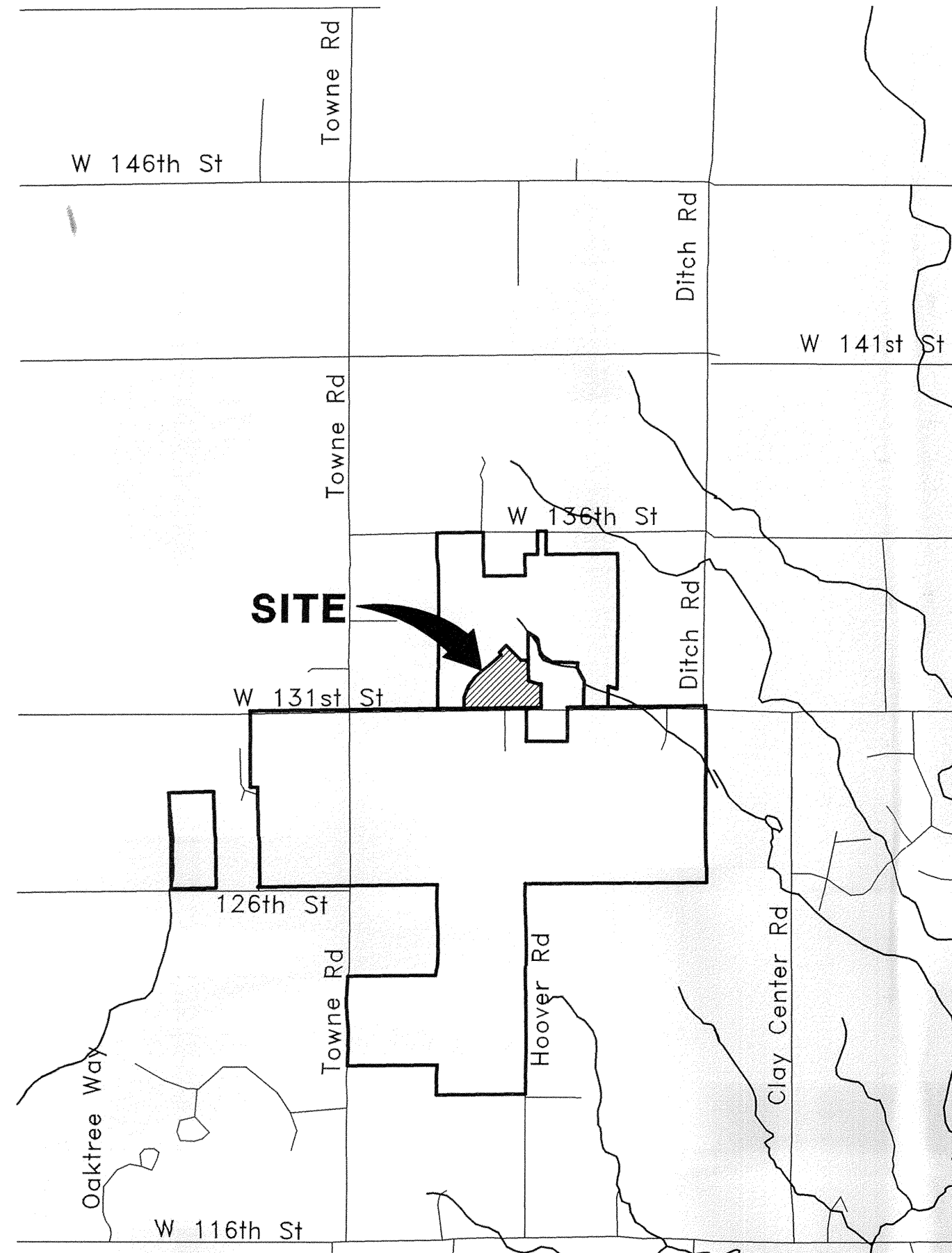
12821 E. NEW MARKET STREET, SUITE 200

CARMEL, INDIANA 46032

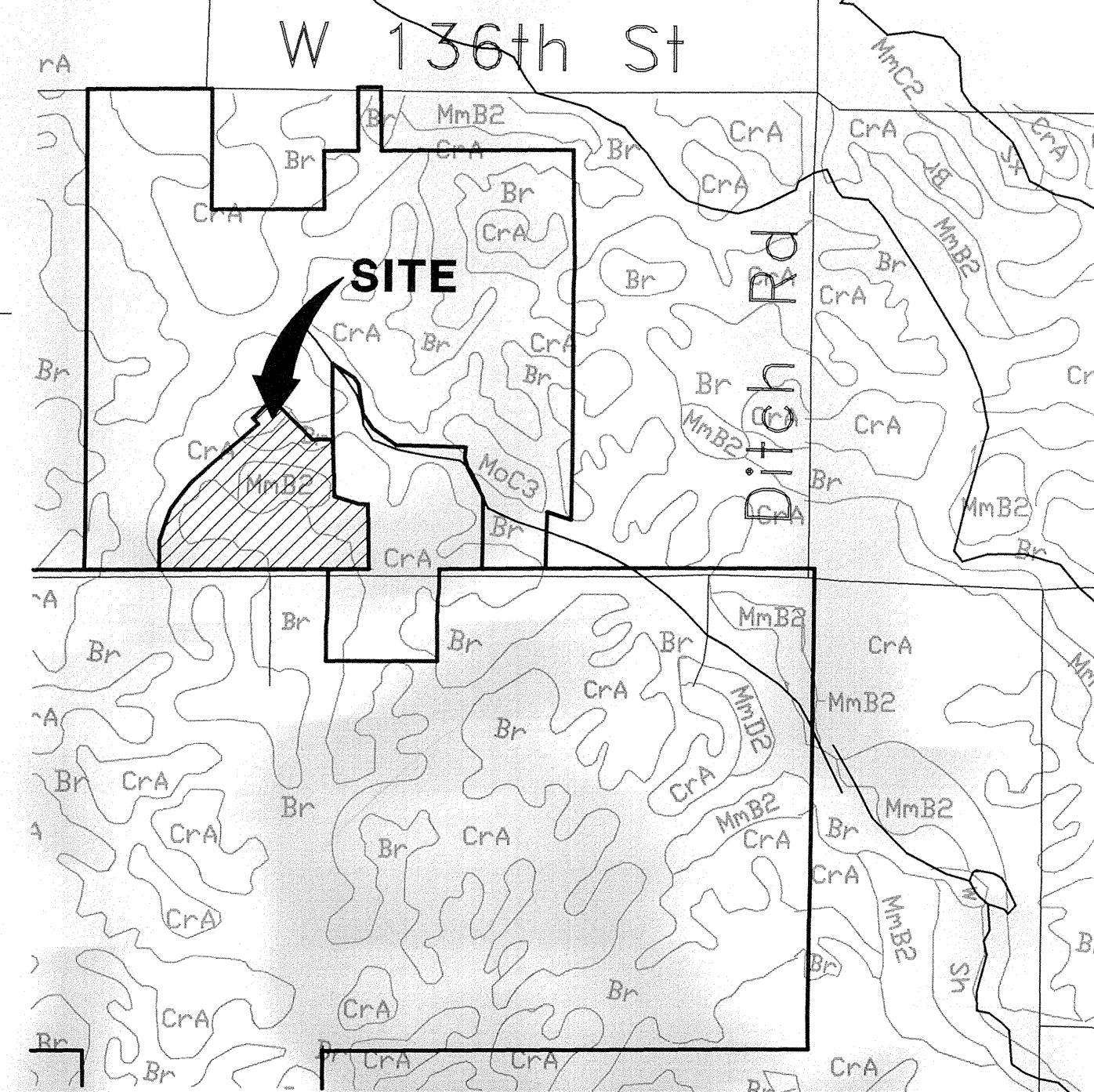
(317) 574-3400

(317) 574-3919 FAX

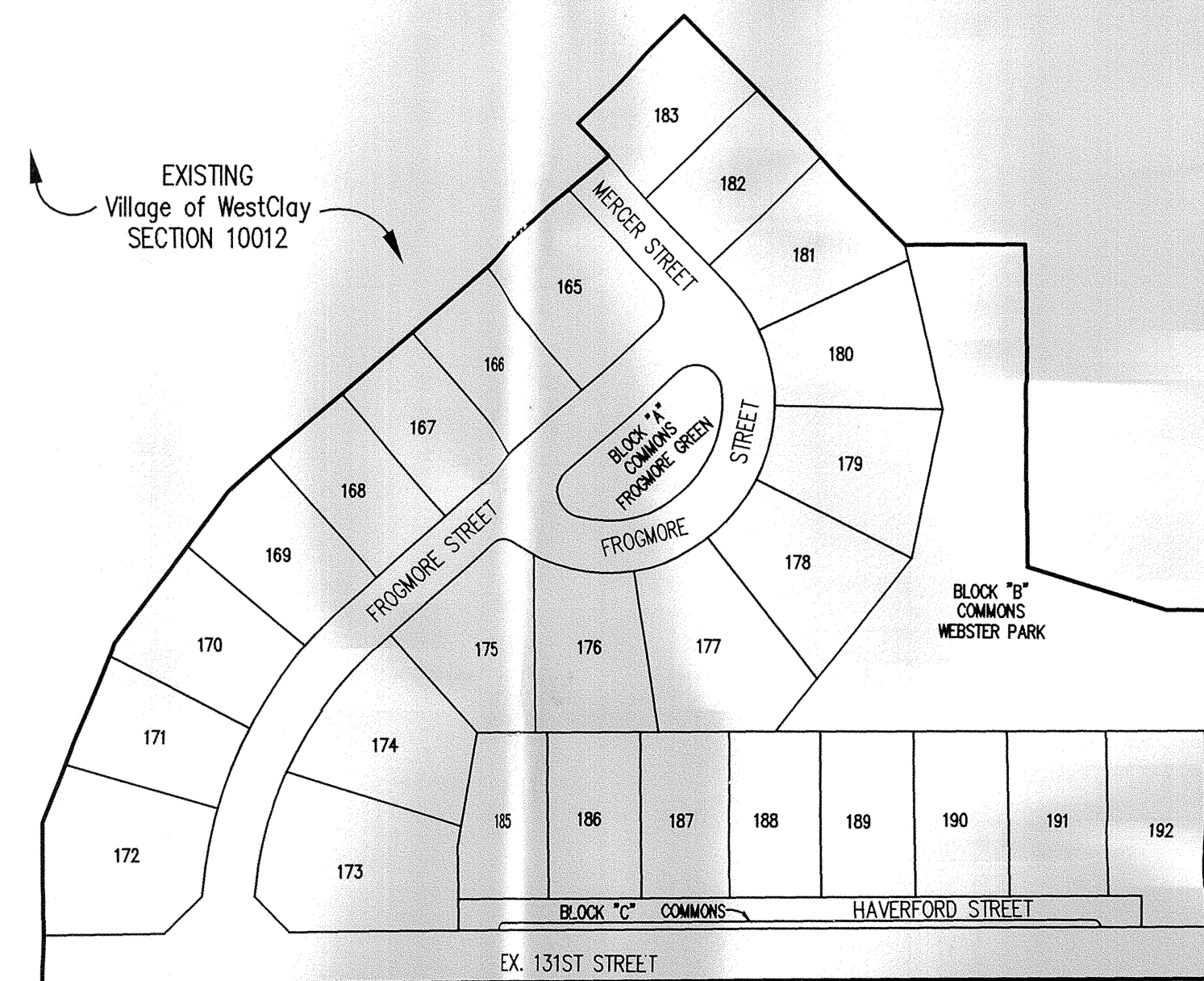
**SUB SURFACE DRAINAGE
SANITARY SEWER
STORM SEWER
WATER LINE
RECORD DRAWING**



AREA MAP
NOT TO SCALE



SOILS MAP
NOT TO SCALE



SITE MAP
SCALE: 1" = 150'

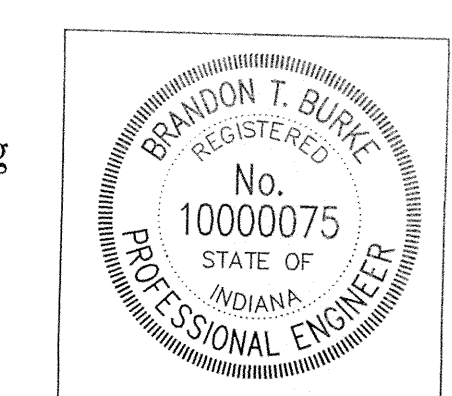
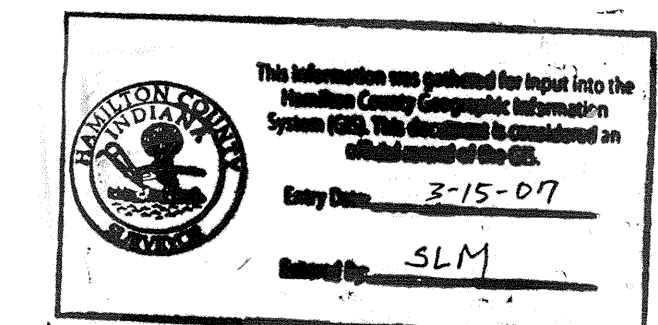
**ROADWAY DESIGN
SPEED = 20MPH**

INDEX	
SHEET No.	DESCRIPTION
C100	COVER SHEET
C101	DEVELOPMENT PLAN
C102	STORMWATER POLLUTION PREVENTION PLAN
C103	TRAFFIC CONTROL PLAN
C201-C202	STREET PLAN & PROFILES
C301	ENTRANCE PLAN
C302	MAINTENANCE OF TRAFFIC AND STRIPING PLAN
C303	INTERSECTION DETAILS
C401	SANITARY SEWER PLAN & PROFILE
C601-C602	STORM SEWER PLAN & PROFILE
C701	WATER DISTRIBUTION PLAN
C702	WATER DETAILS AND SPECIFICATIONS
C801	STREET DETAILS
C802	SANITARY SEWER DETAILS
C803	STORM SEWER DETAILS
C804-C805	STORMWATER POLLUTION PREVENTION DETAILS & SPECIFICATIONS
C806	HAMILTON COUNTY DETAILS
C901	SPECIFICATIONS
L101	LANDSCAPE PLANS



12821 E. New Market Street
Suite 100
Carmel, IN 46032
Telephone: 317.569.8112
Fax: 317.826.6410
www.schneidercorp.com

Architecture
Civil Engineering
Environmental Engineering
Geotechnical Services
GIS + IIS
Home Builder Services
Interior Design
Land Surveying
Landscape Architecture
Transportation Engineering

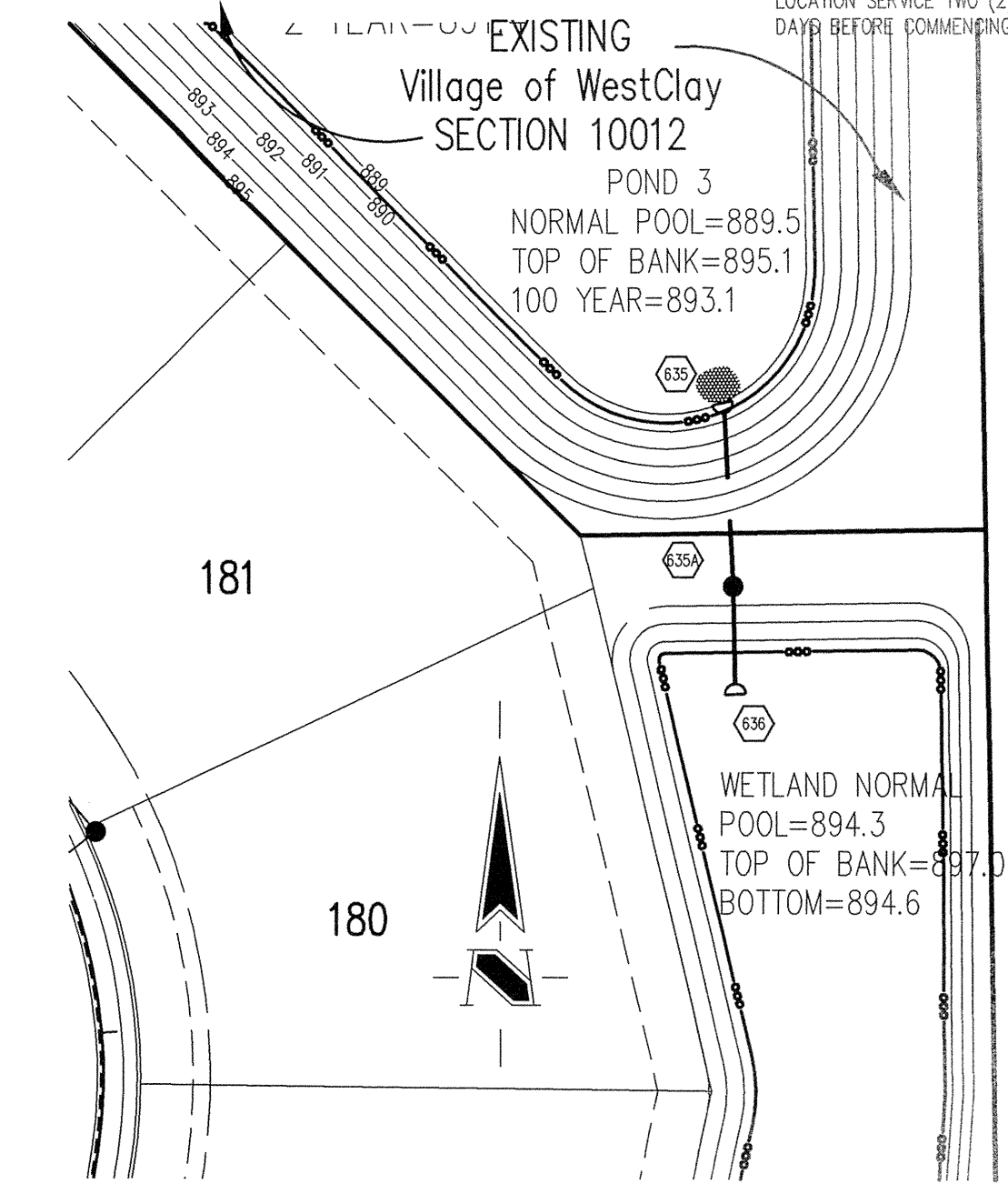
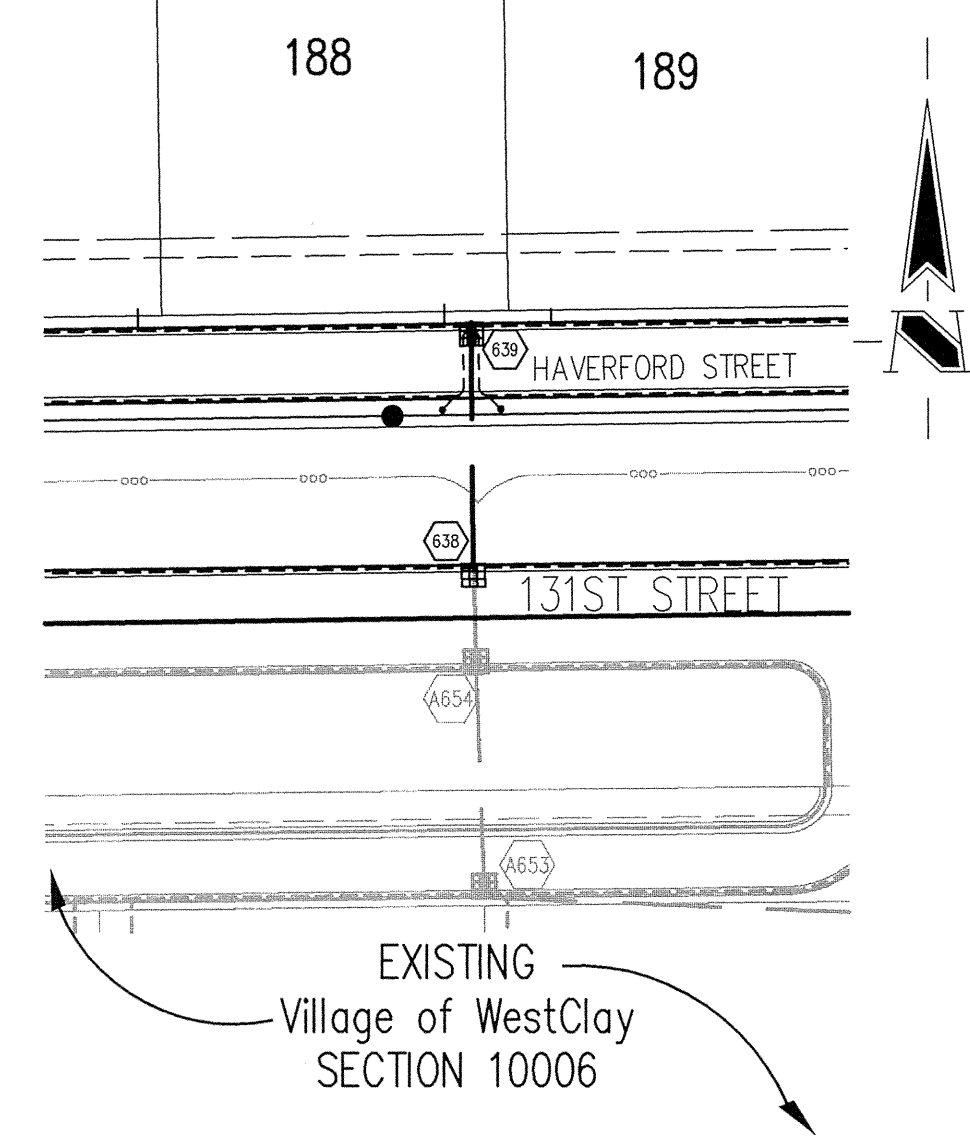
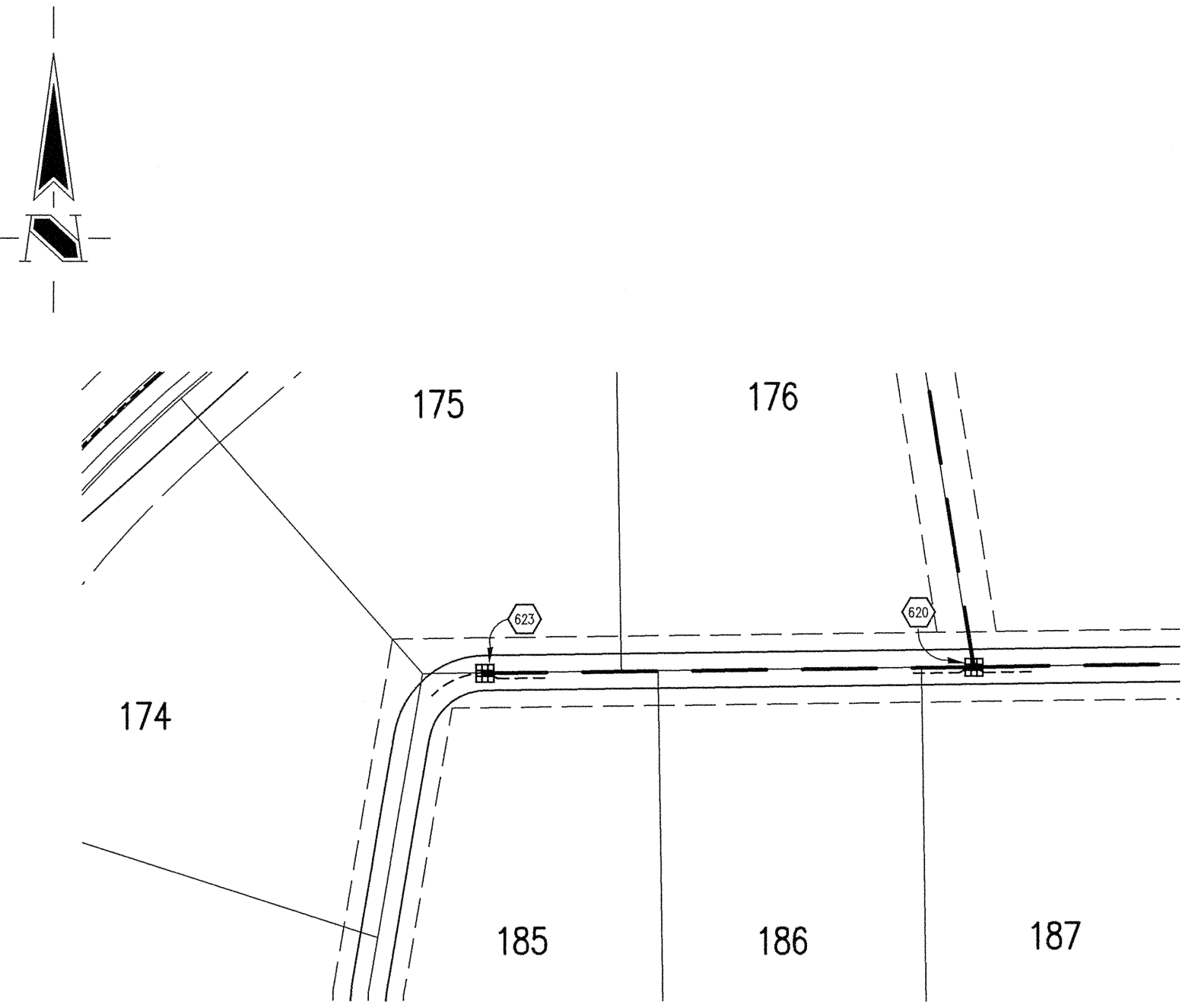
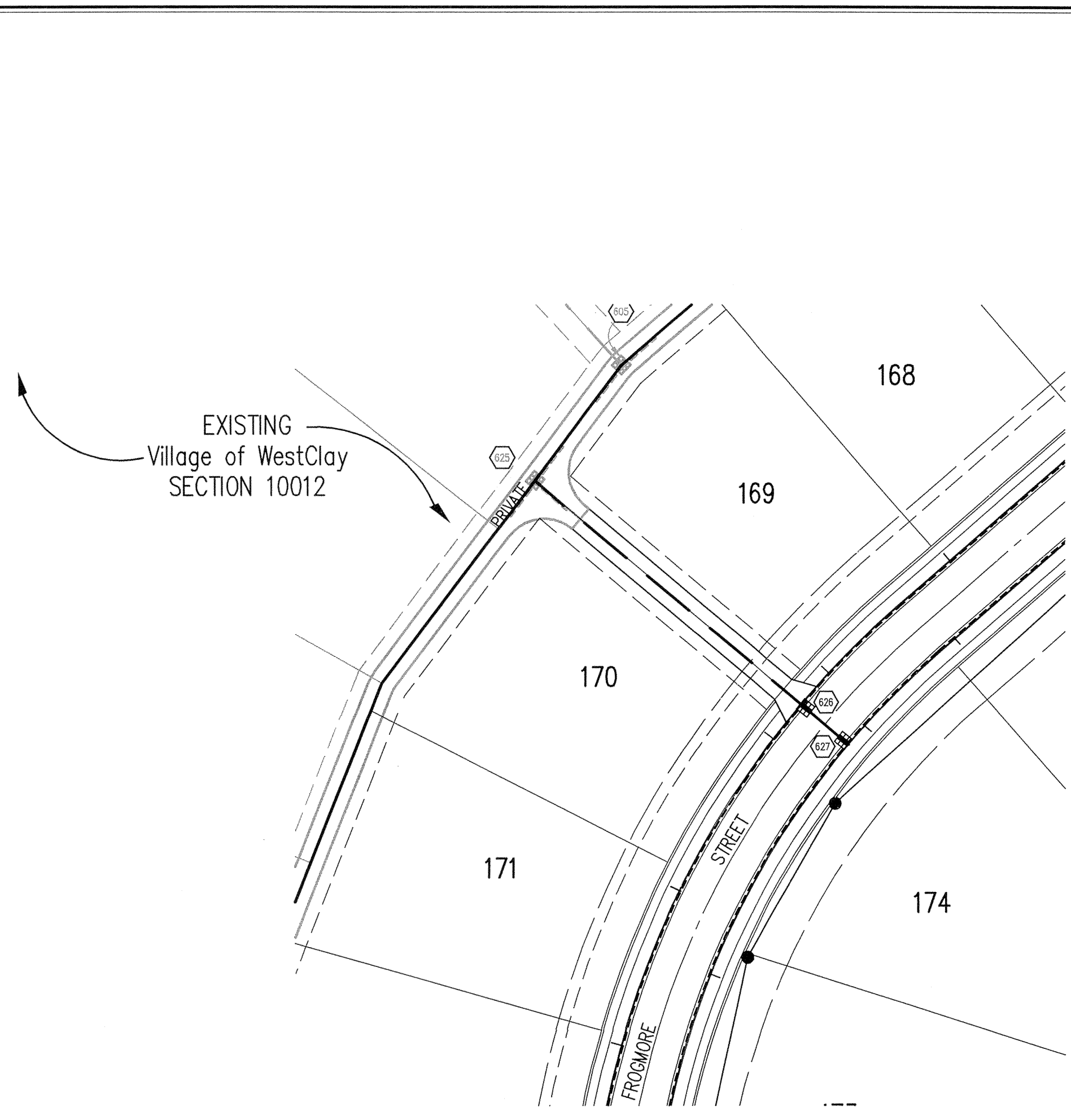


DATE	BY	DESCRIPTION
3/10/05	DCC	ALL SHEETS
3/31/05	BET	ALL SHEETS
4/27/05	BET	ALL SHEETS
5/3/05	BET	C101 & C102
6/14/05	DCC	C101, C602, C803
10/17/05	BET	"RECORD DRAWING"
10/19/05	BET	C101 & C301

Brandon T. Burke
CERTIFIED BY: BRANDON T. BURKE
E-MAIL ADDRESS: bburke@schneidercorp.com

DATE: 01/05/05

SHEET
C100
OF
22



LEGEND/DETAILS

Sheet	Detail	Description
C803	1	Bedding Detail - Reinforced Concrete Pipe (RCP)
C803	5	Straight Curb Inlet Detail
C803	4	Beehive Inlet Detail
C803	2	Storm Manhole Detail
C803	8	Precast Concrete End Section
C803	9	RipRap Detail @ End Section
C803	10	Water Control Structure

NOTE

BENCHMARK

TBM #44
USGS BENCHMARK
CUT "X" NORTH BONNET BOLT IN FIRE HYDRANT
EAST SIDE HOOVER RD. ±100' SOUTH OF CLARIDGE
FARM ENTRANCE.
ELEVATION = 893.39

- GENERAL NOTES**
- TEMPORARY TRAFFIC CONTROL DURING CONSTRUCTION TO CONFORM TO APPLICABLE LOCAL AND STATE STANDARDS.
 - ALL CONSTRUCTION ACTIVITY ON THIS SITE TO BE PERFORMED IN COMPLIANCE WITH APPLICABLE O.S.H.A. STANDARDS FOR WORKER SAFETY.
 - IT SHALL BE THE CONTRACTORS RESPONSIBILITY TO FIELD VERIFY ALL UTILITY LOCATIONS BEFORE CONSTRUCTION BEGINS.
 - CONTRACTORS SHALL MINIMIZE DAMAGE TO EXISTING TREES.
 - FOR INSTALLATION OF STORM MAINS, WATER MAINS, SANITARY MAINS, WATER SERVICE LATERALS, SANITARY SERVICE LATERALS UNDER CITY STREETS, REGARDLESS OF THE JURISDICTION OF THE UTILITY, THE MINIMUM COVER FROM THE TOP OF THE INSTALLED PAYMENT TO THE TOP OF THE INSTALLED PIPE SHALL BE THE PAYMENT SECTION THICKNESS (ALL BITUMINOUS AND AGGREGATE MATERIAL ABOVE THE SUBGRADE) PLUS 1'-0". IF THE STANDARD PRACTICE OF THE UTILITY THAT HAS JURISDICTION OVER THE INSTALLATION HAS A MORE STRINGENT COVER REQUIREMENT, THE MORE STRINGENT REQUIREMENT SHALL GOVERN.

HOLEY MOLEY SAYS "DON'T DIG BLIND"

"IT'S THE LAW"
CALL 2 WORKING DAYS BEFORE YOU DIG
1-800-382-5544
CALL TOLL FREE PER INDIANA STATE LAW IS-69-1991. IT IS AGAINST THE LAW TO EXCAVATE WITHOUT NOTIFYING THE UNDERGROUND LOCATION SERVICE TWO (2) WORKING DAYS BEFORE COMMENCING WORK.

REVISIONS:
1. DEC. 31/05/05: REVISED STORM SEWER AND WETLANDS PER CLIENT.
2. DEC. 4/7/05: ADJUSTED STORM SEWER RECORD DRAWING.
3. DEC. 16/7/05: RECORD DRAWING.

BRANDON T. BURKE
REGISTERED
No. 10000075
STATE OF INDIANA
PROFESSIONAL ENGINEER

Brandon T. Burke
DATE: 01/05/05

THIS DRAWING AND THE IDEAS, DESIGNS AND CONCEPTS CONTAINED HEREIN ARE THE EXCLUSIVE INTELLECTUAL PROPERTY OF THE SCHNEIDER CORPORATION, AND ARE NOT TO BE USED OR REPRODUCED, IN WHOLE OR IN PART, WITHOUT THE WRITTEN CONSENT OF THE SCHNEIDER CORPORATION.

© COPYRIGHTED BY THE SCHNEIDER CORP. (2005)

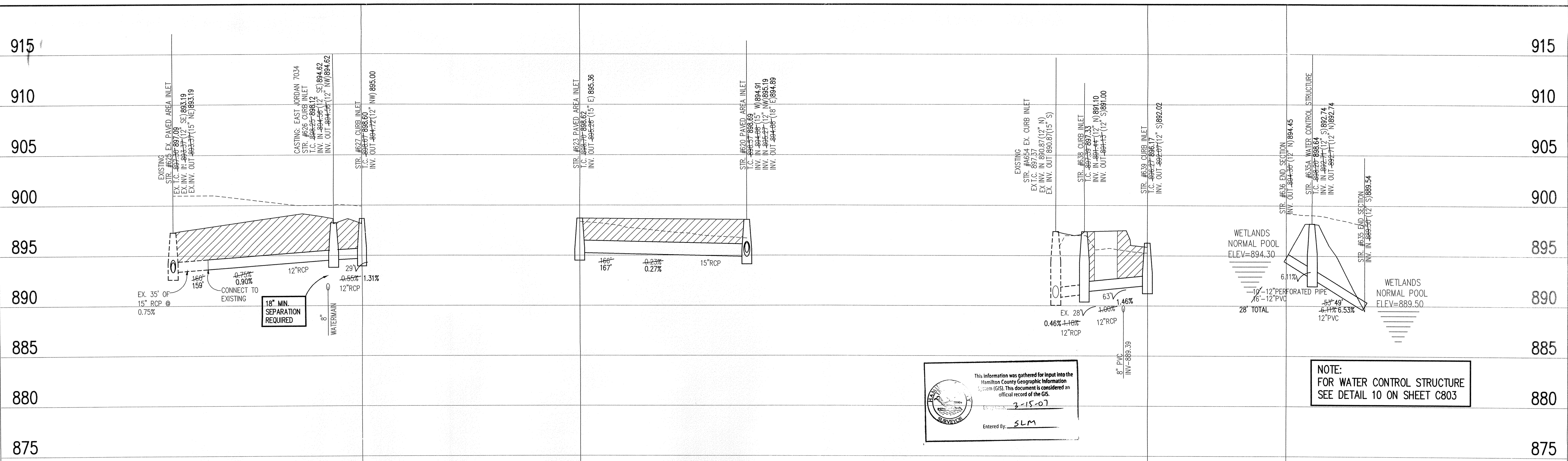
Schneider

THE SCHNEIDER CORPORATION
12821 E. New Market Street
Suite 100
Carmel, IN 46032
Telephone: 317.569.8112
Fax: 317.826.6410
www.schneidercorp.com

Architecture
Civil Engineering
Environmental Engineering
Geotechnical Services
GIS * LIS
Home Builder Services
Interior Design
Land Surveying
Landscape Architecture
Transportation Engineering

STORM SEWER PLAN

SCALE: 1"=50'



This information was gathered for input into the Hamilton County Geographic Information System (GIS). This document is considered an official record of the GIS.

Entered By: **SLM**

NOTE:
FOR WATER CONTROL STRUCTURE SEE DETAIL 10 ON SHEET C803

STORM SEWER RECORD DRAWING

STORM SEWER PROFILE

LEGEND

Existing Grade	New Grade	Granular Backfill

SCALE: HORZ.: 1"=50'
VERT.: 1"=5'

Village of WestClay
SECTION 9001
CARMEL, INDIANA

BRENNICK DEVELOPMENT CO.
CARMEL, INDIANA

DATE: 01/05/05	PROJECT NO.: 1238.9001
DRAWN BY: DCC	CHECKED BY:
SHEET TITLE: STORM SEWER PLAN & PROFILE	
DRAWING FILES: N:\1238\9001\DWGS\C801-602.DWG XREF: 1012-B5.DWG, 9001-B5.DWG XREF: STORM.DWG XREF: 1006S.DWG	

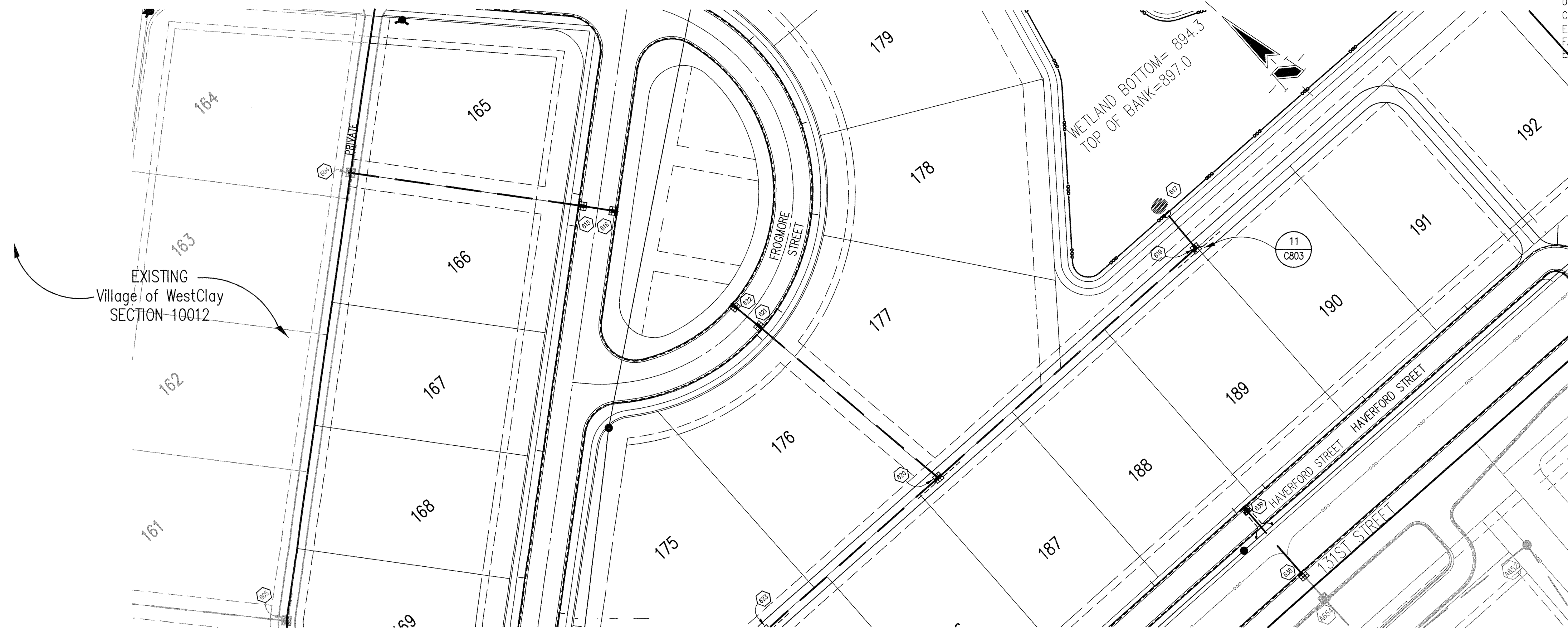
SHEET NO.: **C601**

BENCHMARK

TEM #44
USGS BENCHMARK
CUT "X" NORTH BONNET BOLT IN FIRE HYDRANT
EAST SIDE HOOVER RD. ±100' SOUTH OF CLARIDGE
FARM ENTRANCE.
ELEVATION - 893.39

GENERAL NOTES

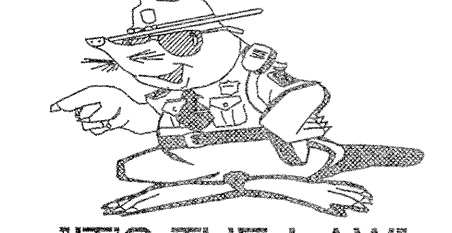
- TEMPORARY TRAFFIC CONTROL DURING CONSTRUCTION TO CONFORM TO APPLICABLE LOCAL AND STATE STANDARDS.
- ALL CONSTRUCTION ACTIVITY ON THIS SITE TO BE PERFORMED IN COMPLIANCE WITH APPLICABLE O.S.H.A. STANDARDS FOR WORKER SAFETY.
- IT SHALL BE THE CONTRACTORS RESPONSIBILITY TO FIELD VERIFY ALL UTILITY LOCATIONS BEFORE CONSTRUCTION BEGINS.
- CONTRACTORS SHALL MINIMIZE DAMAGE TO EXISTING TREES.
- FOR INSTALLATION OF STORM MAINS, WATER MAINS, SANITARY MAINS, WATER SERVICE LATERALS, SANITARY SERVICE LATERALS UNDER CITY STREETS, REGARDLESS OF THE JURISDICTION OF THE UTILITY, THE MINIMUM COVER FROM THE TOP OF THE INSTALLED PAVEMENT TO THE TOP OF THE INSTALLED PIPE SHALL BE THE PAVEMENT SECTION THICKNESS (ALL BITUMINOUS AND AGGREGATE MATERIAL ABOVE THE SUBGRADE) PLUS 1'-0". IF THE STANDARD PRACTICE OF THE UTILITY THAT HAS JURISDICTION OVER THE INSTALLATION HAS A MORE STRINGENT COVER REQUIREMENT, THE MORE STRINGENT REQUIREMENT SHALL GOVERN.



Sheet	Detail Number	Description
C803	1	Bedding Detail - Reinforced Concrete Pipe (RCP)
C803	5	Straight Curb Inlet Detail
C803	4	Beehive Inlet Detail
C803	2	Storm Manhole Detail
C803	8	Precast Concrete End Section
C803	9	RipRap Detail @ End Section
C803	11	STC900 Precast Concrete Stormceptor

NOTE

HOLEY MOLEY SAYS
"DON'T DIG BLIND"



"IT'S THE LAW"
CALL 2 WORKING DAYS BEFORE YOU DIG
1-800-382-5544
CALL TOLL FREE
PER INDIANA STATE LAW IS-69-1991,
IT IS AGAINST THE LAW TO EXCAVATE
WITHOUT NOTIFYING THE UNDERGROUND
LOCATION SERVICE TWO (2) WORKING
DAYS BEFORE COMMENCING WORK.

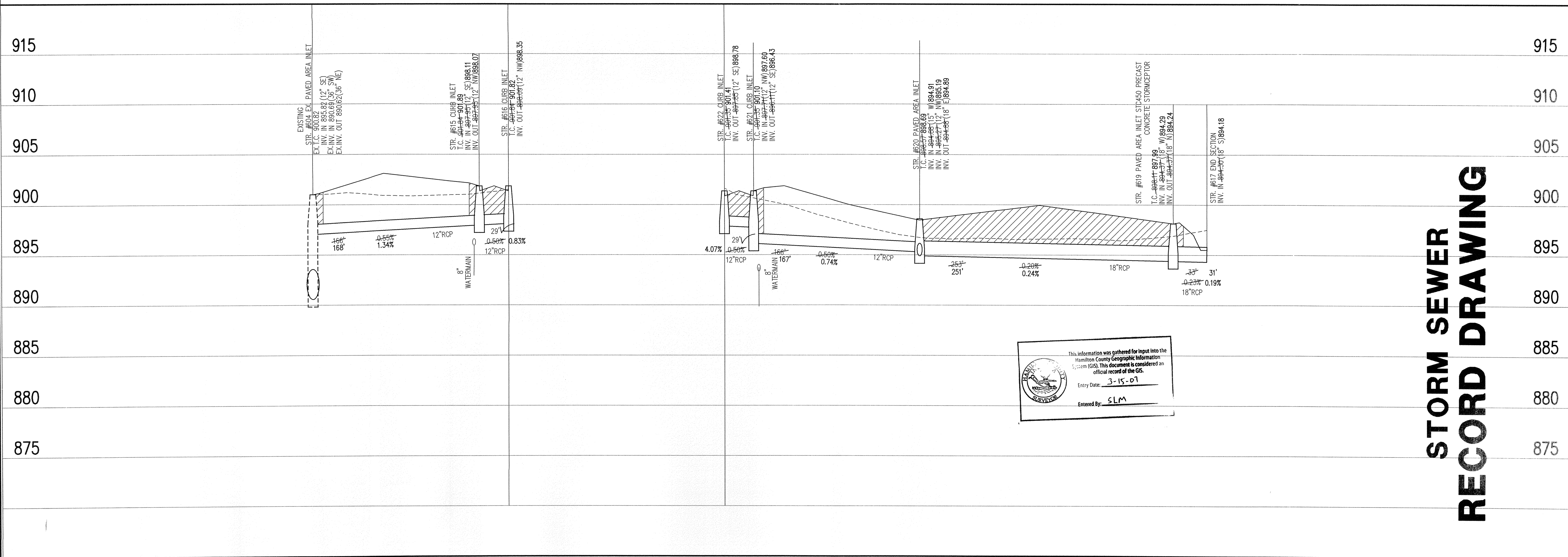
REVISIONS:
1. DEC. 17/05/05: REVISION PER TAC COMMENTS.
2. DEC. 17/05/05: ADJUSTED STORM SEWER AND MET MAINS PER CLIENT.
3. DEC. 17/05/05: REMOVE FIRE GIRE & CHANGED 619 TO A STORMCEPTOR.
4. DEC. 17/05/05: RECORD DRAWING.

BRANDON T. BURKE
REGISTERED PROFESSIONAL ENGINEER
No. 10000075
STATE OF INDIANA
Brandon T. Burke
DATE: 01/05/05
THIS DRAWING AND THE IDEAS, DESIGNS AND CONCEPTS CONTAINED HEREIN ARE THE EXCLUSIVE INTELLECTUAL PROPERTY OF THE SCHNEIDER CORPORATION, AND ARE NOT TO BE USED OR REPRODUCED, IN WHOLE OR IN PART, WITHOUT THE WRITTEN CONSENT OF THE SCHNEIDER CORPORATION.
© COPYRIGHTED BY THE SCHNEIDER CORP. (2005)

Schneider
THE SCHNEIDER CORPORATION
12821 E. New Market Street
Suite 100
Carmel, IN 46032
Telephone: 317.569.8112
Fax: 317.826.6410
www.schneidercorp.com
Architecture
Civil Engineering
Environmental Engineering
Geotechnical Services
GIS * LIS
Home Builder Services
Interior Design
Land Surveying
Landscape Architecture
Transportation Engineering

STORM SEWER PLAN

SCALE: 1"=50'



STORM SEWER RECORD DRAWING

This information was gathered for input into the Hamilton County Geographic Information System (GIS). This document is considered an official record of the GIS.
Entry Date: 3-15-01
Entered By: SLM

STORM SEWER PROFILE

LEGEND

	Existing Grade
	New Grade
	Granular Backfill

SCALE: HORZ.: 1"=50'
VERT.: 1"=5'

Village of WestClay
SECTION 9001
CARMEL, INDIANA
BRENNWICK DEVELOPMENT CO.
CARMEL, INDIANA

DATE: 01/05/05	PROJECT NO.: 1238.9001
DRAWN BY: DCC	CHECKED BY:
SHEET TITLE: STORM SEWER PLAN & PROFILE	
DRAWING FILES: N:\V238\9001\DWG\CS\01-602.DWG XREF: 1012-BS.DWG, 9001-BS.DWG XREF: STORM.DWG XREF: 1008BS.DWG	

SHEET NO.: **C602**